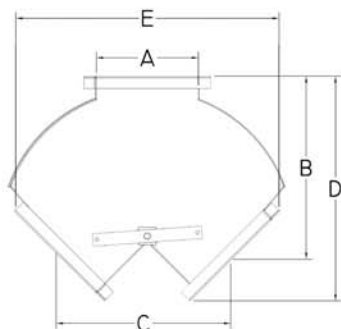
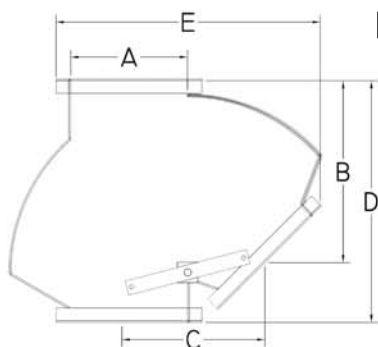


**PREMIUM Y-TYPE DIVERTER VALVES**



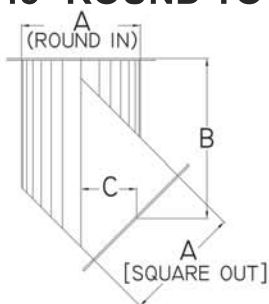
SIZE	A	B	C	D	E
6"	6-1/8"	13-1/8"	10-11/32"	16-5/32"	18-31/32"
8"	8-1/8"	16-15/32"	13-5/16"	20-3/8"	24-9/32"
10"	10-1/8"	18-5/8"	16"	23-3/32"	28-29/32"
12"	12-1/8"	2-13/32"	20-7/8"	26-25/32"	33-3/32"
14"	14-1/8"	24-1/16"	22"	30-3/32"	34-1/8"
16"	16-1/8"	27-1/16"	24-27/32"	33-13/16"	38-3/8"
18"	18-1/8"	29-31/32"	26-31-32"	37-1/8"	41-7/8"
20"	20-1/8"	32-7/8"	29-7/8"	41"	46-1/4"
24"	24-1/8"	36-1/4"	33"	54-1/4"	52-3/16"

**PREMIUM K-TYPE DIVERTER VALVES**



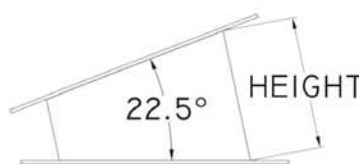
SIZE	A	B	C	D	E
6"	6-1/8"	14-3/4"	9-3/8"	17-7/8"	16-3/4"
8"	8-1/8"	16-17/32"	11-1/32"	20-3/8"	20-3/32"
10"	10-1/8"	18-5/8"	12-3/4"	23-1/4"	23-17/32"
12"	12-1/8"	18-17/32"	14-19/32"	25-1/4"	27-3/8"
14"	14-1/8"	23-1/4"	16-5/8"	29-1/2"	31-1/4"
16"	16-1/8"	25-13/16"	18-3/8"	32-11/16"	34-11/16"
18"	18-1/8"	28"	20-1/8"	35-1/2"	38-5/32"
20"	20-1/8"	34-27/32"	21-29/32"	43-1/8"	41-5/8"
24"	24-1/8"	37-11/32"	28-23/32"	50-1/8"	51-7/8"

**45° ROUND TO SQUARE ELBOWS**



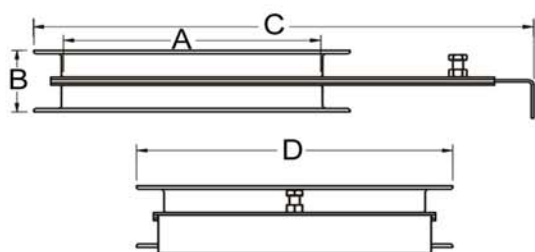
A	B	C
12"	16-1/8"	5-5/8"
14"	18-1/4"	6-3/8"
16"	20-3/8"	7-1/8"
18"	22-1/2"	7-3/4"
20"	24-5/8"	8-1/8"
24"	28-7/8"	9-7/8"

**ADJUSTABLE ELBOWS**



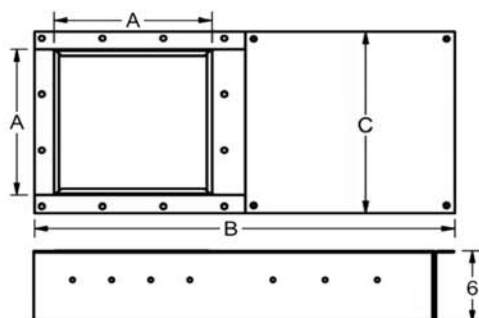
SIZE	HEIGHT	SIZE	HEIGHT
6"	5"	16"	10"
8"	6"	18"	11"
10"	7"	20"	12"
12"	8"	22"	13"
14"	9"	24"	14"

**HAND SLIDE GATES**



SIZE	A	B	C	D
6"	6-1/8"	3"	13-1/4"	8-5/8"
8"	8-1/8"	3"	16-3/4"	10-5/8"
10"	10-1/8"	3"	20-1/4"	12-5/8"
12"	12-1/8"	3-1/2"	24"	15-1/8"
14"	14-1/8"	3-1/2"	27-1/2"	17-1/8"
16"	16-1/8"	4"	31-1/4"	19-5/8"

**ROLLER SLIDE GATES**



SIZE	A	B	C
6"	6-1/8"	19-3/4"	8-5/8"
8"	8-1/8"	23-3/4"	10-5/8"
10"	10-1/8"	27-3/4"	12-5/8"
12"	12-1/8"	32-1/4"	15-1/8"
14"	14-1/8"	36-1/4"	17-1/8"
16"	16-1/8"	40-1/4"	19-1/8"
18"	18-1/8"	44-1/4"	21-1/8"
20"	20-1/8"	48-1/4"	23-1/8"
22"	22-1/8"	52-1/4"	25-1/8"
24"	24-1/8"	56-1/4"	27-1/8"

ALL DIMENSIONS ARE SUBJECT TO CHANGE.

PLEASE CONTACT PREMIER COMPONENTS WITH ANY DIMENSIONAL INQUIRIES.