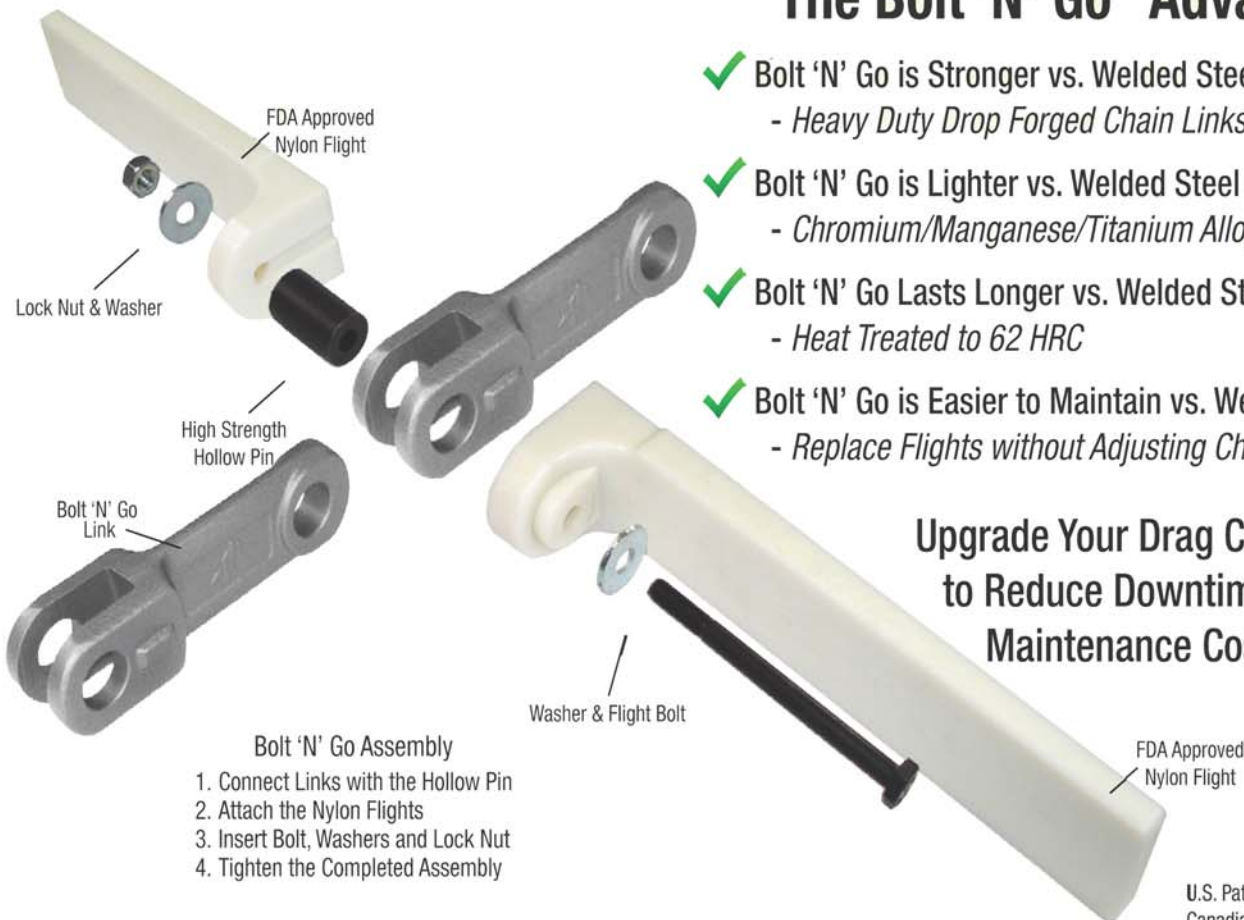


# The Bolt 'N' Go™ Advantage

- ✓ Bolt 'N' Go is Stronger vs. Welded Steel Chain  
- Heavy Duty Drop Forged Chain Links
- ✓ Bolt 'N' Go is Lighter vs. Welded Steel Chain  
- Chromium/Manganese/Titanium Alloy Steel
- ✓ Bolt 'N' Go Lasts Longer vs. Welded Steel Chain  
- Heat Treated to 62 HRC
- ✓ Bolt 'N' Go is Easier to Maintain vs. Welded Steel Chain  
- Replace Flights without Adjusting Chain Tension

**Upgrade Your Drag Conveyor to Reduce Downtime and Maintenance Costs!**

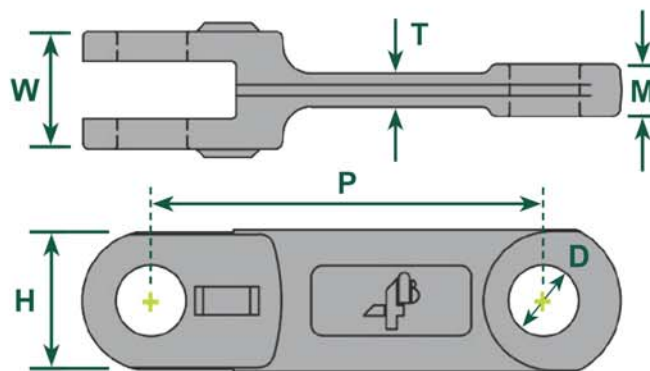


- Bolt 'N' Go Assembly**
1. Connect Links with the Hollow Pin
  2. Attach the Nylon Flights
  3. Insert Bolt, Washers and Lock Nut
  4. Tighten the Completed Assembly

U.S. Patent No. 7,080,728  
Canadian Patent No. 2,548,660  
Mexican Patent No. 272,056

Chain	102-NA	142-NA	142-HA
Working Load	8,080 lbs	13,500 lbs	20,200 lbs
Average Weight (Per Ft)	3.60 lbs	6.45 lbs	10.30 lbs
Wear Resistance	Rockwell C57 - C62	Rockwell C57 - C62	Rockwell C57 - C62
Shock Resistance	Yes	Yes	Yes
Conveyor Width (Maximum)	16 in	30 in	30 in
CHAIN LINK DIMENSIONS			
P	4.02 in / 102 mm	5.59 in / 142 mm	5.59 in / 142 mm
H	1.42 in / 36 mm	1.97 in / 50 mm	1.97 in / 50 mm
T	0.28 in / 7 mm	0.47 in / 12 mm	0.65 in / 16.5 mm
W	1.10 in / 28 mm	1.65 in / 42 mm	2.44 in / 62 mm
M	0.47 in / 12 mm	0.74 in / 18.7 mm	1.12 in / 28.5 mm
D	0.55 in / 14 mm	0.98 in / 25 mm	0.98 in / 25 mm

NOTE - STAINLESS STEEL LINKS & OTHER LINK SIZES AVAILABLE



Reduce Downtime & Maintenance Costs

Bolt on Flight Replacement (No Welding)  
Forged and Hardened Chain Links

Quick and Easy Chain Assembly