



4B  
Components  
Limited

**SpeedSwitch M800**



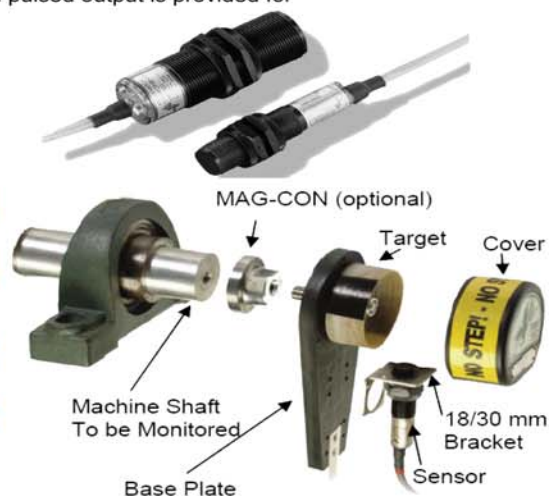
DESCRIPTION	PRICE
Elite SpeedSwitch 24-240 VAC/DC <b>M8001V10C</b>	★
Whirligig (Universal Target/Bracket/Guard) <b>WG1-4B-4</b>	★
Mag-Con Magnetic Connector 2" Diameter <b>MAG2000</b>	★
Tachometer 110/240 VAC <b>TACH3V5</b>	★

Monitors Rotating Machinery for Dangerous Underspeed Conditions

An inductive sensing device located in the nose of the M800 enclosure will detect a metal target. This target can be an existing bolt head or device attached to a shaft. Ideally the target should be ferrous metal but non-ferrous metal will be detected at a shorter range. A signal is generated by this target on each revolution of the shaft. The M800 is then set to the normal machine RPM by calibrating with the magnet provided. If the shaft speed falls to 10% or 20% below normal RPM, the M800 provides output signals via its internal relays for control purposes such as alarm and/or shutdown. An opto-isolated pulsed output is provided for tachometers, PLCs and speed displays.

**StopSwitch M100 & SlipSwitch M300**

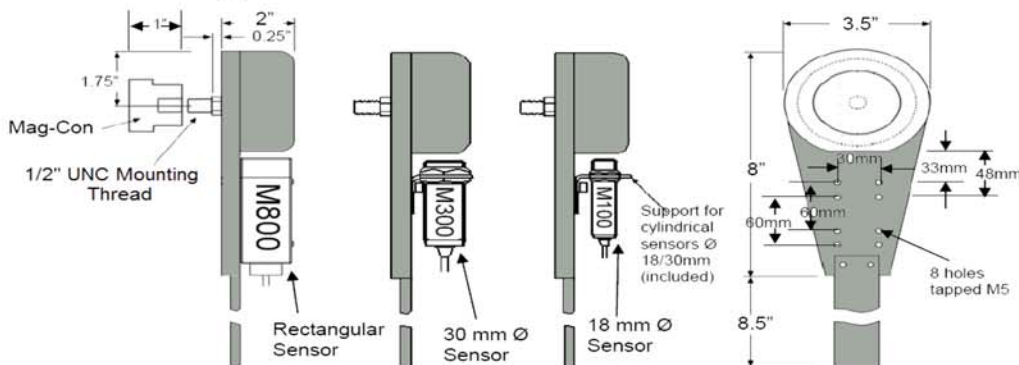
DESCRIPTION	PRICE
StopSwitch M100 12-240 VAC/DC Class 2 Div 1 <b>Specify 2 or 5 wire</b>	★
SlipSwitch M300 12-240 VAC/DC Class 2 Div 1 pn: <b>M3005V10CA</b>	★
Conduit Adapter M18 - 1/2" NPT (M100) pn: <b>A12NPT</b>	★
Conduit Adapter M30 - 3/4" NPT (M300) <b>A34NPT</b>	★
Whirligig (Universal Target/Bracket/Guard) <b>WG1-4B-4</b>	★
Includes 18/30mm Sensor Bracket and 4 Targets	
Mag-con Magnetic Connector 2" Diameter <b>MAG2000</b>	★
Whirligig Target 4 Pulse <b>WG1-(specify pulse when ordering)</b>	★
Whirligig Target 1, 2, or 8 Pulse <b>WG1-(SPECIFY 1 2 4 OR 8)</b>	★
Adapter 1/2" M / 1/4" F <b>A12NPT</b>	★



Detects Dangerous Underspeed and Stop Conditions

The M300 Slipswitch and M100 Stopswitch are unique and simple shaft speed monitoring devices. The M300 self calibrates to the normal running speed of the shaft. It provides an output at 20% underspeed and can be used to detect dangerous belt slip and machine underspeeds on conveyors and bucket elevators.

The M100 Stopswitch requires no calibration and provides an output when the shaft has stopped rotating. It can be used for process control, motion verification and stopped shaft indication.



**ProxSwitch P800/P300**

DESCRIPTION	PRICE
P800 ProxSwitch with NPN/PNP Output 10-30 VDC Class 2 Div 1 <b>P8001V34FC</b>	★
P800 ProxSwitch with Relay Output 12-240 VAC/DC Class 2 Div 1 <b>P8002V10FC</b>	★
Whirligig (Universal Target/Bracket/Guard) with 1 Target <b>WG1-4B-1</b>	★
Whirligig (Universal Target/Bracket/Guard) with 2 Targets <b>WG1-4B-2</b>	★
Whirligig (Universal Target/Bracket/Guard) with 4 Targets <b>WG1-4B-4</b>	★
Whirligig (Universal Target/Bracket/Guard) with 8 Targets <b>WG1-4B-8</b>	★
Mag-Con. Magnetic Connector 2" Diameter <b>MAG2000</b>	★
Tachometer 110/240 VAC <b>TACH3V5</b>	★



Inductive Sensor Designed to Detect Shaft Speed, Shaft Position, Gate Position, or Object Presence.

The P800 ProxSwitch is a Class 2, Division 1 approved limit switch style proximity sensor that works on the damped oscillator principle. No contact is made between the sensor and plant being monitored. The P800 will detect a ferrous object at 1/2" and non-ferrous metal object at a distance of 5/16".

Two different sensor outputs are available. One with changeover relay contact outputs that works on a supply voltage of 24 to 240 VAC / 12 to 240 VDC and another with solid state NPN / PNP transistor outputs which works on a supply voltage of 10 to 30 VDC.

Both units are fully encapsulated and come with a 6 ft lead and 1/2" conduit entry. Two LED's show power supply and input status.

4B SWITCHES & SENSORS