

**BIN FLOOR SHEETING**

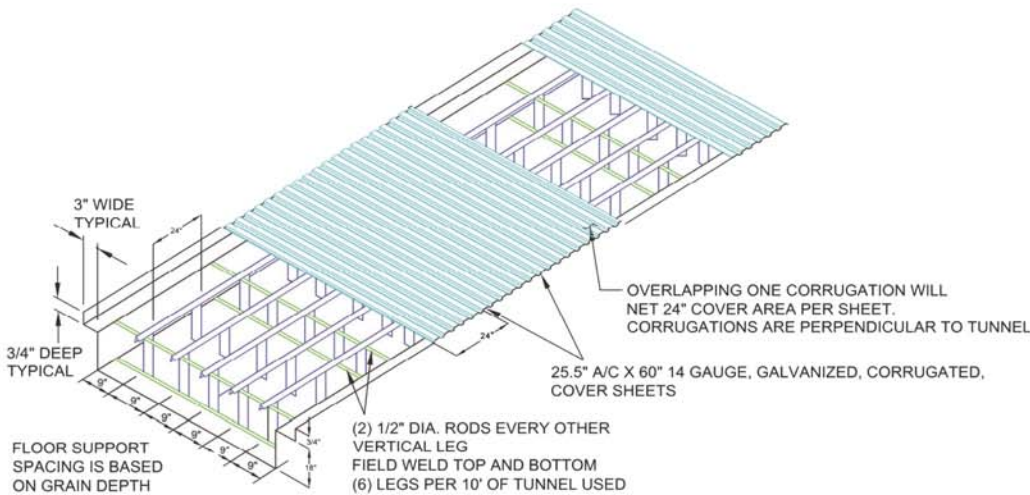
Flush floor bin aeration cover sheets are constructed of high quality 14 gauge galvanized steel as standard. Each sheet comes in 25.5" widths for a 24" cover with overlap of one corrugation and is perforated with Ø3/32" holes on 1/4" staggered centers with an open area of 13%. The perforation pattern optimizes the strength of the steel while allowing for efficient aeration. 5,000 pound per square foot loading drive over flooring is also available.



Available components include:

"Z" flashing for 90° taps come standard in 10' lengths, flush floor aeration supports, torpedo heads with hardware, and hopper tie downs (specify steel or concrete hopper hardware when ordering).

**TYPICAL FLOOR SUPPORTS AND COVER SHEET DETAILS**



LENGTHS	WEIGHT
120	59
100	49
96	47
80	39
72	35
60	30
54	27
48	24
40	20
36	18
30	15
24	12
20	10

Please contact a Premier representative for lengths not shown above.

weight in pounds

**CORRUGATED METAL PIPE AND ACCESSORIES**

Full round corrugated metal pipe (CMP) and accessories are constructed of high quality 14 gauge galvanized steel as standard. Each pipe is perforated with Ø3/32" holes on 1/4" staggered centers with an open area of 13%. The corrugations are 2.667" from hill to hill with .625" valleys. All pipes are available in lengths of 2' increments up to 20' and can be purchased as solid (imperforated) 14 gauge as well.

PERFORATED CMP	
DIA.	WEIGHT
12	10.9
15	13.4
16	14.3
18	16.0
21	18.7
24	21.3
30	26.3
36	31.6

weight in pounds



SOLID CMP	
DIA.	WEIGHT
12	12.2
15	15.1
16	16.1
18	18.0
21	21.0
24	23.9
30	29.6
36	35.5

weight in pounds

7" AND 12" WIDE CLAMP BANDS ARE AVAILABLE IN ALL SHOWN DIAMETERS FOR CONNECTING LENGTHS OVER 20'. END PLATES CAN BE SUPPLIED IN EACH DIAMETER WITH OR WITHOUT ANGLE FOOT AND HARDWARE.

PLEASE CONTACT PREMIER FOR ALL YOU AERATION NEEDS.