



Premier Components Y & K Style Gate valves have replaceable gate blades, wiper blades, machined steel rack & pinion motion and bearing-supported pinion shafts. They include top and bottom weather covers, flanged inlets and outlets and interlocking chain drives between blades for single operator control.

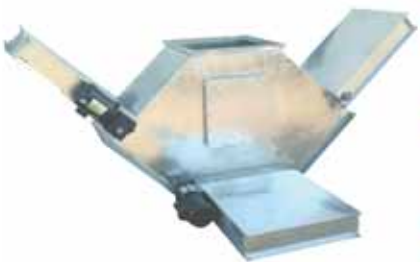
18" and larger gate valves have 1/4" shafts and 3/4" plate slides.



Premier Components 3-Way Gate valves have replaceable gate blades, wiper blades, machined steel rack & pinion motion and bearing-supported pinion shafts. They include top and bottom weather covers and flanged inlets and outlets.

18" and larger gate valves have 1/4" shafts and 3/4" plate slides.

3-way gate valves require (2) drives to operate.



45° Y-TYPE GATE VALVES

LINED PRICING IS FOR THE VALVE ONLY AND DOES NOT INCLUDE ANY SQUARE TO ROUND TRANSITION LINING. ADD PRICE OF LINED TRANSITIONS FROM PAGE 11.

SIZE	CONFIGURATION	10ga. SQUARE IN & OUT	10ga. ROUND IN & OUT	7ga. SQUARE IN & OUT	7ga. ROUND IN & OUT	⊕ Add for 10ga. AR LINED	⊕ Add for 1/4" Ceramic Tile Lined & 1/4" Thick AR Steel Blade
12"	Painted	⊕	⊕	⊕	⊕	★	★
	Galvanized	⊕	⊕	⊕	⊕	★	★
14"	Painted	⊕	⊕	⊕	⊕	★	★
	Galvanized	⊕	⊕	⊕	⊕	★	★
16"	Painted	⊕	⊕	⊕	⊕	★	★
	Galvanized	⊕	⊕	⊕	⊕	★	★
18"	Painted	⊕	⊕	⊕	⊕	★	★
	Galvanized	⊕	⊕	⊕	⊕	★	★
20"	Painted	⊕	⊕	⊕	⊕	★	★
	Galvanized	⊕	⊕	⊕	⊕	★	★
24"	Painted	⊕	⊕	⊕	⊕	★	★
	Galvanized	⊕	⊕	⊕	⊕	★	★
30"	Painted	⊕	⊕	⊕	⊕	★	★
	Galvanized	⊕	⊕	⊕	⊕	★	★
36"	Painted	⊕	⊕	⊕	⊕	★	★
	Galvanized	⊕	⊕	⊕	⊕	★	★

45° K-TYPE GATE VALVES

LINED PRICING IS FOR THE VALVE ONLY AND DOES NOT INCLUDE ANY SQUARE TO ROUND TRANSITION LINING. ADD PRICE OF LINED TRANSITIONS FROM PAGE 11.

SIZE	CONFIGURATION	10ga. SQUARE IN & OUT	10ga. ROUND IN & OUT	7ga. SQUARE IN & OUT	7ga. ROUND IN & OUT	⊕ Add for 10ga. AR LINED	⊕ Add for 1/4" Ceramic Tile Lined & 1/4" Thick AR Steel Blade
12"	Painted	⊕	⊕	⊕	⊕	★	★
	Galvanized	⊕	⊕	⊕	⊕	★	★
14"	Painted	⊕	⊕	⊕	⊕	★	★
	Galvanized	⊕	⊕	⊕	⊕	★	★
16"	Painted	⊕	⊕	⊕	⊕	★	★
	Galvanized	⊕	⊕	⊕	⊕	★	★
18"	Painted	⊕	⊕	⊕	⊕	★	★
	Galvanized	⊕	⊕	⊕	⊕	★	★
20"	Painted	⊕	⊕	⊕	⊕	★	★
	Galvanized	⊕	⊕	⊕	⊕	★	★
24"	Painted	⊕	⊕	⊕	⊕	★	★
	Galvanized	⊕	⊕	⊕	⊕	★	★
30"	Painted	⊕	⊕	⊕	⊕	★	★
	Galvanized	⊕	⊕	⊕	⊕	★	★
36"	Painted	⊕	⊕	⊕	⊕	★	★
	Galvanized	⊕	⊕	⊕	⊕	★	★

45° 3-WAY GATE VALVES

LINED PRICING IS FOR THE VALVE ONLY AND DOES NOT INCLUDE ANY SQUARE TO ROUND TRANSITION LINING. ADD PRICE OF LINED TRANSITIONS FROM PAGE 11.

SIZE	CONFIGURATION	10ga. SQUARE IN & OUT	10ga. ROUND IN & OUT	7ga. SQUARE IN & OUT	7ga. ROUND IN & OUT	⊕ Add for 10ga. AR LINED	⊕ Add for 1/4" Ceramic Tile Lined & 1/4" Thick AR Steel Blade
12"	Painted	⊕	⊕	⊕	⊕	★	★
	Galvanized	⊕	⊕	⊕	⊕	★	★
14"	Painted	⊕	⊕	⊕	⊕	★	★
	Galvanized	⊕	⊕	⊕	⊕	★	★
16"	Painted	⊕	⊕	⊕	⊕	★	★
	Galvanized	⊕	⊕	⊕	⊕	★	★
18"	Painted	⊕	⊕	⊕	⊕	★	★
	Galvanized	⊕	⊕	⊕	⊕	★	★
20"	Painted	⊕	⊕	⊕	⊕	★	★
	Galvanized	⊕	⊕	⊕	⊕	★	★
24"	Painted	⊕	⊕	⊕	⊕	★	★
	Galvanized	⊕	⊕	⊕	⊕	★	★
30"	Painted	⊕	⊕	⊕	⊕	★	★
	Galvanized	⊕	⊕	⊕	⊕	★	★
36"	Painted	⊕	⊕	⊕	⊕	★	★
	Galvanized	⊕	⊕	⊕	⊕	★	★

GATE VALVE ELECTRIC DRIVE OPTIONS ★★

ANDCO ELECTRIC ACTUATOR - ADD PRICE TO COST OF SELECTED SLIDE GATE			
UP TO 12" STROKE	⊕	UP TO 24" STROKE	⊕
UP TO 18" STROKE	⊕	UP TO 30" STROKE	⊕
		UP TO 36" STROKE	⊕

ELECTRIC ACTUATORS ARE 1 PH/120V AND COME WITH; (2) BUILT-IN LIMIT SWITCHES, FACE FLANGE MOUNTING BRACKET AND EXPLOSION PROOF ENCLOSURE.

MOTOR/GEARBOX DRIVE INCLUDING LIMIT SWITCHES - ADD TO COST OF SELECTED SLIDE GATE	
1/2 HP / 1ph / 110V TEFC (TOTALLY ENCLOSED FAN COOLED) MOTOR WITH RA GEARBOX	⊕
1/2 HP / 1ph / 110V NEMA 9 EXPLOSION PROOF MOTOR WITH RA GEARBOX	⊕
1/2 HP / 3ph / 230-460V TEFC (TOTALLY ENCLOSED FAN COOLED) MOTOR WITH RA GEARBOX	⊕
1/2 HP / 3ph / 230-460V NEMA 9 EXPLOSION PROOF MOTOR WITH RA GEARBOX	⊕

ADD 20% FOR 60° DIVERTER VALVES

⊕⊕ 3-WAY VALVES REQUIRE (2) SEPARATE DRIVES TO OPERATE. INDIVIDUAL DRIVE SETUP IS AVAILABLE.

CONTACT PREMIER FOR STAINLESS STEEL PRICING.

SEE PAGE 34 FOR DIMENSIONAL INFORMATION.