

# BASICCLAMP

Our BasicClamp clamp bands are still very economical and uncomplicated. BasicClamp is an excellent choice when assembly area is easy to negotiate around and when flanges cooperate. BasicClamps often do leave a bit to be desired in the "bolt in my left pocket, right hand free department" that leaves you wishing you had that third hand far too often. Premier now offers some new innovations that are sure to come in handy.



## GALVANIZED CLAMP BANDS WITH HARDWARE

Spout Size			Spout Size			Pipe Size BasicClamp		
Ø	Galvanized	Lbs	Ø	Galvanized	Lbs	Ø	Galvanized	Lbs
6"	☼	1.7	16"	☼	6.6	6-5/8"	☼	1.8
8"	☼	2.1	18"	☼	7.9	8-5/8"	☼	2.2
10"	☼	2.5	20"	☼	9.9	10-3/4"	☼	2.7
12"	☼	3.3	24"	☼	11.0	12-3/4"	☼	3.6
14"	☼	6.2						

SEE PAGE 16 FOR STAINLESS STEEL BASIC CLAMP BAND PRICING.

# QUICKCLAMP

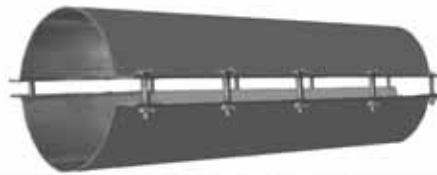
QuickClamp clamp bands feature a lever system handle that allows for quick locking and unlocking of flanges. The closing lever system is designed with a cotter pin lock to avoid accidental opening. Locking and unlocking is performed with one hand and is ideal for tough to reach areas or where frequent maintenance is required. Contact Premier Components today to see how much money you can save in assembly time by purchasing QuickClamp clamp bands for your next project.



## GALVANIZED QUICKCLAMP CLAMP BANDS WITH HARDWARE

Spout Size			Spout Size		
Ø	Galvanized	Lbs	Ø	Galvanized	Lbs
6"	☼	5.1	10"	☼	7.0
8"	☼	6.0	12"	☼	8.7

## PIPE SLEEVES



## SPOUT SADDLES



24" Long Weld Style Pipe Sleeves		
SIZE	Galvanized	Carbon Steel
6"	☼	☼
8"	☼	☼
10"	☼	☼
12"	☼	☼
14"	☼	☼
16"	☼	☼
18"	☼	☼

24" Long Bolted With Hardware		
SIZE	Galvanized	Carbon Steel
6"	☼	☼
8"	☼	☼
10"	☼	☼
12"	☼	☼
14"	☼	☼
16"	☼	☼
18"	☼	☼

SPOUT SADDLES - 8" LONG, 10ga. WITH HARDWARE		
SIZE	Galvanized	Carbon Steel
6"	☼	☼
8"	☼	☼
10"	☼	☼
12"	☼	☼
14"	☼	☼
16"	☼	☼
18"	☼	☼

CLAMP BANDS, PIPE SLEEVES & SPOUT SADDLES