

COMMERCIAL BIN UNLOAD

COMMERCIAL BIN WELLS

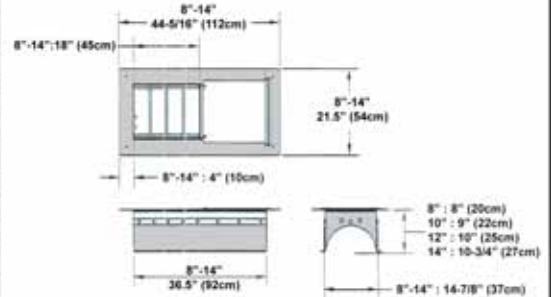
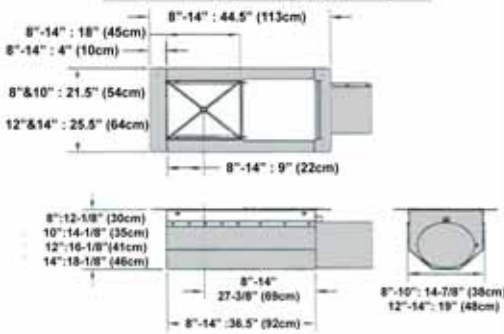
All bin wells are constructed of heavy gauge painted material and furnished with heavy full gates that operate on rollers.
Rack & pinion openers are available for center and intermediate wells.

CONTROL PIPE KITS FOR COMMERCIAL BIN WELLS

SIZE	WT.	PART#	PRICE
8"	116	BJ0813W	⊙
10"	127	BJ1023W	⊙
12"	140	BJ1213W	⊙
14"	162	BJ1413W	⊙

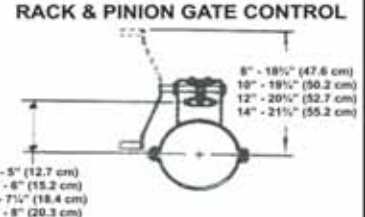
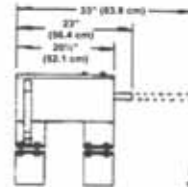
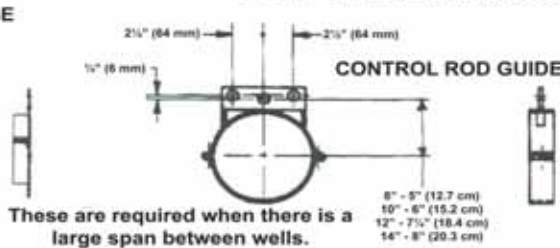
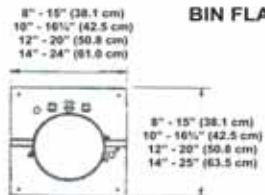
BIN DIA	WT.	PART#	PRICE
24"	37	BJ12240C	⊙
27"	38	BJ12270C	⊙
30"	40	BJ12300C	⊙
33"-34"	43	BJ12340C	⊙
36"	56	BJ12360C	⊙
37"-39"	60	BJ12390C	⊙
40"	61	BJ12400C	⊙
42"	64	BJ12420C	⊙
48"-49"	73	BJ12490C	⊙
54"-55"	82	BJ12550C	⊙
60"	92	BJ12600C	⊙
63"	96	BJ12630C	⊙
68"-69"	99	BJ12690C	⊙
72"	102	BJ12720C	⊙
75"	106	BJ12750C	⊙
78"	111	BJ12780C	⊙
80"	113	BJ12800C	⊙
82"	116	BJ12820C	⊙
90"	123	BJ12900C	⊙
92"	150	BJ12920C	⊙
105"	171	BJ12970C	⊙
113"	208	BJ12980C	⊙
120"	217	BJ12990C	⊙

SIZE	WT.	PART#	PRICE
8"	81	BJ0814W	⊙
10"	83	BJ1024W	⊙
12"	100	BJ1214W	⊙
14"	107	BJ1414W	⊙



Standard control pipe kit construction has one 1/2" pipe to the center well only. An additional 1/2" pipe on each side of the center gate pull allows individual control of intermediate wells. Each kit may be used on 8", 10" or 12" systems and includes the pipe necessary to control the gates as indicated.

BIN WELL ACCESSORIES



These are required when there is a large span between wells.

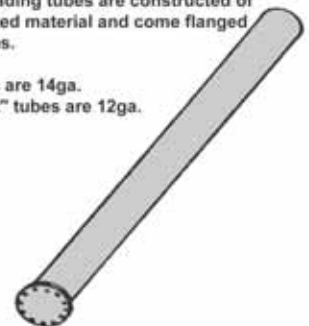
ACCESSORY	8"			10"			12"			14"		
	DESCRIPTION	WT.	PART#	PRICE	DESCRIPTION	WT.	PART#	PRICE	DESCRIPTION	WT.	PART#	PRICE
BIN FLANGE	5	B1219C	⊙	7	BJ1011W	⊙	8	BJ1201W	⊙	10	BJ1401W	⊙
R & P - 18" STROKE	36	BJ0806W	⊙	37	PA101509	⊙	38	BH1206W	⊙	42	BJ1402W	⊙
CTRL ROD GUIDE	3	BJ0805W	⊙	3	BJ1015W	⊙	4	BJ1205W	⊙	6	BJ1405W	⊙

COMMERCIAL UNLOADING TUBES

BIN DIA	LENGTH	# WELLS	8"			10"			12"		
			WT.	PART#	PRICE	WT.	PART#	PRICE	WT.	PART#	PRICE
24"	12'-9"	2	89	BT081209	⊙	152	BT101209	⊙	186	BT121209	⊙
27"	14'-3"	2	99	BT081403	⊙	169	BT101403	⊙	207	BT121403	⊙
30"	15'-9"	2	109	BT081509	⊙	186	BT101509	⊙	228	BT121509	⊙
33"-34"	17'-9"	2	122	BT081709	⊙	209	BT101709	⊙	255	BT121709	⊙
36"	18'-9"	3	129	BT081809	⊙	221	BT101809	⊙	269	BT121809	⊙
37"-39"	20'-3"	3	139	BT082003	⊙	238	BT102003	⊙	290	BT122003	⊙
40"	20'-9"	3	142	BT082009	⊙	244	BT102009	⊙	297	BT122009	⊙
42"	21'-9"	4	149	BT082109	⊙	255	BT102109	⊙	310	BT122109	⊙
48"-49"	25'-3"	4	172	BT082503	⊙	295	BT102503	⊙	358	BT122503	⊙
54"-55"	28'-3"	4	192	BT082803	⊙	330	BT102803	⊙	400	BT122803	⊙
60"	30'-9"	4	227	BT083009	⊙	398	BT103009	⊙	473	BT123009	⊙
63"	32'-3"	4	237	BT083203	⊙	408	BT103203	⊙	493	BT123203	⊙
68"-69"	35'-3"	4	257	BT083503	⊙	442	BT103503	⊙	535	BT123503	⊙
72"	36'-9"	4	267	BT083609	⊙	460	BT103609	⊙	556	BT123609	⊙
75"	38'-3"	4	277	BT083803	⊙	477	BT103803	⊙	576	BT123803	⊙
78"	39'-9"	4	287	BT083909	⊙	494	BT103909	⊙	597	BT123909	⊙
80"	40'-9"	4	n/a	n/a	n/a	505	BT104009	⊙	611	BT124009	⊙
82"	41'-9"	4	n/a	n/a	n/a	534	BT104109	⊙	645	BT124109	⊙
90"	45'-9"	4	n/a	n/a	n/a	562	BT104509	⊙	680	BT124509	⊙
92"	46'-9"	5	n/a	n/a	n/a	574	BT104609	⊙	694	BT124609	⊙
105"	53'-3"	5	n/a	n/a	n/a	n/a	n/a	n/a	783	BT125303	⊙
113"	57'-3"	6	n/a	n/a	n/a	n/a	n/a	n/a	840	BT125703	⊙
120"	60'-9"	6	n/a	n/a	n/a	n/a	n/a	n/a	926	BT126009	⊙

All unloading tubes are constructed of galvanized material and come flanged with caps.

8" tubes are 14ga.
10" & 12" tubes are 12ga.



14" COMMERCIAL BIN UNLOAD KITS

Kits include unloading tube, flight, center well, intermediate wells, rack & pinion control for well gates, connecting pipes, and bin flange.

BIN DIA	# WELLS	LENGTH	BIN CTR TO FLANGE	PART#	PRICE
36"	3	18'-9"	21'-0"	BW14361	⊙
42"	3	21'-9"	24'-0"	BW14421	⊙
48"	4	24'-9"	27'-0"	BW14481	⊙
54"	4	27'-9"	30'-0"	BW14541	⊙
60"	4	30'-9"	33'-0"	BW14601	⊙
72"	5	36'-9"	39'-0"	BW14721	⊙
75"	5	38'-9"	41'-0"	BW14751	⊙
78"	5	39'-9"	42'-0"	BW14781	⊙
90"	6	45'-9"	48'-0"	BW14901	⊙
92"	6	46'-9"	49'-0"	BW14921	⊙

14" COMMERCIAL POWER HEADS

DESCRIPTION	PART#	PRICE
Reducer drive, 3-belt, bins 36"-72"	BJ1436DHR	⊙
Reducer drive, 4-belt, bins 75"-92"	BJ1475DHR	⊙

