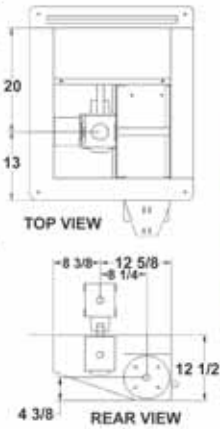


8" HEAVY DUTY POWER SWEEP KITS

Utilizes 7" O.D. x 7ga. sweep flight on 1-7/8" tube. 7" O.D. x 1/4" unload flight on 1-7/8" tube. Includes heavy duty double gearbox and clutch. Each kit includes unloading tube, unloading flight, center well, intermediate wells, rack & pinion controlled well gates, control pipes for well gates, sweep flight with back shields, sweep carrier (48" & larger bins), and reduction drive sweep end wheel.

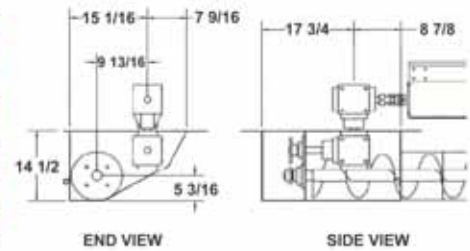
Bin Dia.	# Int. Wells	HP	Weight	Part #	Price
30'	2	7.5	736	BJ12761P	★
36'	3	7.5	827	BJ12781P	★
42'	4	10	932	BJ12801P	★
48'	4	10	1,045	BJ12811P	★
54'	4	10	1,120	BJ12821P	★
60'	5	15	1,255	BJ12831P	★
72'	6	15	1,465	BK12841P	★



10" HEAVY DUTY POWER SWEEP KITS

Utilizes 9 3/8" O.D. x 1/4" sweep flight on 2-7/8" tube. 9" O.D. x 1/4" unload flight on 2-3/8" tube. Larger step drive gearbox with No. 60 R.C. Drive. Square stub at center well for attachment to unload auger. Each kit includes unloading tube, unloading flight, center well, intermediate wells, rack & pinion controlled well gates, control pipes for well gates, sweep flight with back shields, sweep carrier (48" & larger bins), and reduction drive sweep end wheel.

Bin Dia.	# Int. Wells	HP	Weight	Part #	Price
30'	-	10	1,038	BJ13763P	★
36'	3	15	1,119	BJ13783P	★
42'	4	15	1,351	BJ13803P	★
48'	4	15	1,534	BJ12813P	★
54'	4	20	1,641	BJ13823P	★
60'	5	15	1,730	BJ13833P	★
72'	6	20	2,020	BJ13843P	★
75'	6	20	2,075	BJ13853P	★
78'	6	20	2,125	BJ13863P	★



Commercial Power Sweeps (Includes NEW Sweep End-Wheel)

Commercial Power Sweeps may be adapted to grain pump loops, auger unloaders, u-trough, en masse, drag conveyors or other special applications. The standard sweep unit drive is separate from the rest of the unit and is 90° to the unloader. When grain will no longer unload through the center and intermediate wells, the separate Power Sweep drive motor is started and operates on a 1" solid drive shaft with 1" bearings in a 6" tube. The sweep and back shield are supplied in sections. Center portion of sweep to be used prior to adding subsequent sections until the entire sweep has been assembled and the bin unloaded. Commercial Power Sweeps should not be installed in concrete unless troughs or tunnels are used for the drive and the unloading components. One Sweep carrier assembly is standard with all units of 48" and larger.

Each Commercial Power Sweep consists of a center well, intermediate wells, sweep, sweep drive, well gate controls and reduction sweep wheel. Specify one of the following unload systems: tube type, u-trough or mass-ter mover. \* Auger unloaders require a tube cap.

600 SERIES FOR 6" TUBE TYPE UNLOADER

Bin Dia.	# Int. Wells	HP	Weight	Part #	Price
36'	3	3	942	P06362P	★
42'	4	3	1,061	P06422P	★
48'	4	5	1,151	P06482P	★
54'	4	5	1,212	P06542P	★
60'	5	5	1,303	P06602P	★

800 SERIES FOR 8" TUBE TYPE UNLOADER

Bin Dia.	# Int. Wells	HP	Weight	Part #	Price
36'	3	5	1,102	P08363P	★
42'	4	5	1,289	P08423P	★
48'	4	7.5	1,336	P08483P	★
54'	4	7.5	1,402	P08543P	★
60'	5	7.5	1,605	P08603P	★

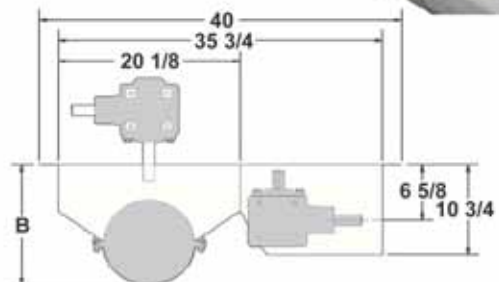
1000 SERIES FOR 10" TUBE TYPE UNLOADER (for 13" Floors)

Bin Dia.	# Int. Wells	HP	Weight	Part #	Price
36'	3	5	999	P10364P**	★
42'	4	5	1,102	P10424P**	★
48'	4	7.5	1,316	P10484P**	★
54'	4	7.5	1,411	P10544P**	★
60'	5	7.5	1,506	P10604P**	★
72'	6	10	1,851	P10724P**	★
75'	6	10	1,950	P10754P**	★

\*\*Note: 10" Power sweeps for 15" floors add "-15" to Catalog No.

1200 SERIES FOR 12" TUBE TYPE UNLOADER

Bin Dia.	# Int. Wells	HP	Weight	Part #	Price
36'	3	5	1,031	P12363P	★
42'	4	5	1,132	P12423P	★
48'	4	7.5	1,348	P12483P	★
54'	4	7.5	1,443	P12543P	★
60'	5	7.5	1,538	P12603P	★
72'	6	10	1,883	P12723P	★
75'	6	10	1,982	P12753P	★



UNLOADING DIAMETER	B
6"	10.5
8"	12.5
10"	14.5
12"	16.5