

SQUARE SPOUTING ACCESSORIES

SQUARE SPOUTING ACCESSORIES



SQUARE 10° AND 45° FLANGED WEDGES

SIZE	10ga. PAINTED	10ga. GALVANIZED	7ga. PAINTED	7ga. GALVANIZED	ADD FOR 1/4" URETHANE or 10ga. AR STEEL	ADD FOR 1/4" TILE
6"	⊕	⊕	⊕	⊕	⊕	⊕
8"	⊕	⊕	⊕	⊕	⊕	⊕
10"	⊕	⊕	⊕	⊕	⊕	⊕
12"	⊕	⊕	⊕	⊕	⊕	⊕
14"	⊕	⊕	⊕	⊕	⊕	⊕
16"	⊕	⊕	⊕	⊕	⊕	⊕
18"	⊕	⊕	⊕	⊕	⊕	⊕
20"	⊕	⊕	⊕	⊕	⊕	⊕
22"	⊕	⊕	⊕	⊕	⊕	⊕
24"	⊕	⊕	⊕	⊕	⊕	⊕

Call Premier Components for custom angled wedges.

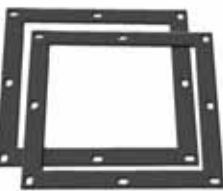


5 PIECE ADJUSTABLE SQUARE ELBOWS

SIZE	CONFIGURATION	10ga.	7ga.	1/4" URETHANE or 10ga. AR STEEL LINED	1/4" TILE LINED
6"	PAINTED	⊕	N/A	⊕	⊕
	GALVANIZED	⊕	⊕	⊕	⊕
8"	PAINTED	⊕	⊕	⊕	⊕
	GALVANIZED	⊕	⊕	⊕	⊕
10"	PAINTED	⊕	⊕	⊕	⊕
	GALVANIZED	⊕	⊕	⊕	⊕
12"	PAINTED	⊕	⊕	⊕	⊕
	GALVANIZED	N/A	⊕	⊕	⊕
14"	PAINTED	⊕	⊕	⊕	⊕
	GALVANIZED	N/A	⊕	⊕	⊕
16"	PAINTED	⊕	⊕	⊕	⊕
	GALVANIZED	N/A	⊕	⊕	⊕
18"	PAINTED	N/A	⊕	⊕	⊕
	GALVANIZED	N/A	⊕	⊕	⊕
20"	PAINTED	N/A	⊕	⊕	⊕
	GALVANIZED	N/A	⊕	⊕	⊕
22"	PAINTED	N/A	⊕	⊕	⊕
	GALVANIZED	N/A	⊕	⊕	⊕
**24"	PAINTED	N/A	⊕	⊕	⊕
	GALVANIZED	N/A	⊕	⊕	⊕

5 PIECE ADJUSTABLE SQUARE ELBOW LINED PRICING INCLUDES ELBOWS AND INSTALLED LINING MATERIAL--IT IS NOT AN ADDER.

**24" UNITS ARE 24" ALL THE WAY THRU AND DO NOT UTILIZE 26" ELBOWS AS 26" CLAMP BANDS ARE UNAVAILABLE.



SQUARE FLAT FLANGES

SIZE	MATERIAL DIMENSIONS	FLAT FLANGES
6"	1 1/2" x 3/16"	⊕
8"	1 1/2" x 3/16"	⊕
10"	1 1/2" x 3/16"	⊕
12"	1 1/2" x 3/16"	⊕
14"	1 1/2" x 3/16"	⊕
16"	1 1/2" x 3/16"	⊕
18"	1 1/2" x 3/16"	⊕
20"	1 1/2" x 3/16"	⊕
22"	1 1/2" x 3/16"	⊕
24"	1 1/2" x 3/16"	⊕
26"	2" x 3/16	⊕
28"	2" x 3/16	⊕
30"	2" x 3/16	⊕



SQUARE ANGLE IRON FLANGES

SIZE	STANDARD DUTY		HEAVY DUTY	
	MATERIAL DIMENSION	ANGLE IRON FLANGES	MATERIAL DIMENSION	ANGLE IRON FLANGES
6"	1 1/2" x 3/16"	⊕	1 1/4" x 1/4"	⊕
8"	1 1/2" x 3/16"	⊕	1 1/4" x 1/4"	⊕
10"	1 1/2" x 3/16"	⊕	1 1/4" x 1/4"	⊕
12"	1 1/2" x 3/16"	⊕	1 1/2" x 3/8"	⊕
14"	1 1/2" x 3/16"	⊕	1 1/2" x 3/8"	⊕
16"	1 1/2" x 3/16"	⊕	1 1/2" x 3/8"	⊕
18"	1 1/2" x 3/16"	⊕	1 1/2" x 3/8"	⊕
20"	1 1/2" x 3/16"	⊕	1 1/2" x 3/8"	⊕
22"	1 1/2" x 3/16"	⊕	1 1/2" x 3/8"	⊕
24"	1 1/2" x 3/16"	⊕	1 1/2" x 3/8"	⊕
26"	2" x 3/16	⊕		
28"	2" x 3/16	⊕	2" x 3/8"	⊕
30"	2" x 3/16	⊕	2" x 3/8"	⊕

⊕ HD USED ON ALL SQUARE SPOUTS



SQUARE LOAD-OUT SPOUT HINGES

SIZE	PAINTED	GALVANIZED
8"	⊕	⊕
10"	⊕	⊕
12"	⊕	⊕
14"	⊕	⊕
16"	⊕	⊕
18"	⊕	⊕
20"	⊕	⊕
22"	⊕	⊕
24"	⊕	⊕

HEAVY DUTY HINGES UTILIZE 2" SHAFT PINS, 1/2" PLATE HOUSING SIDES AND ARE 12" HIGH. ANY SPOUTING ATTACHED BEYOND HINGES SHOULD BE LIMITED TO 10" OR LESS WITH TURNDOWN.

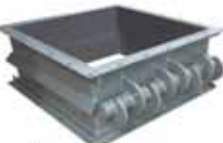
HEAVY DUTY LOAD-OUT SPOUT HINGES

SIZE	PRICE	ADD FOR 1/4" URETHANE or 10ga. AR STEEL	ADD for 1/4" Tile
20"	⊕	⊕	⊕
24"	⊕	⊕	⊕
30"	⊕	⊕	⊕



SQUARE SPOUT CAPS - 10GA.

SIZE	PAINTED	GALVANIZED
6"	⊕	⊕
8"	⊕	⊕
10"	⊕	⊕
12"	⊕	⊕
14"	⊕	⊕
16"	⊕	⊕
18"	⊕	⊕
20"	⊕	⊕
22"	⊕	⊕
24"	⊕	⊕
26"	⊕	⊕
28"	⊕	⊕
30"	⊕	⊕



LOAD-OUT HINGE LOCKS \$ EACH



LOCKED POSITION



UNLOCKED POSITION