

## SQUARE FIXED ELBOW, HIP STYLE 45°

SIZE	10ga. PAINTED	10ga. GALVANIZED	7ga. PAINTED	7ga. GALVANIZED	Add for 1/4" Urethane	Add fo 10ga. AR Steel Lined	Add for 1/4" Ceramic Tile Lined
6"	☒	☒	☒	☒	☒	☒	☒
8"	☒	☒	☒	☒	☒	☒	☒
10"	☒	☒	☒	☒	☒	☒	☒
12"	☒	☒	☒	☒	☒	☒	☒
14"	☒	☒	☒	☒	☒	☒	☒
16"	☒	☒	☒	☒	☒	☒	☒
18"	☒	☒	☒	☒	☒	☒	☒
20"	☒	☒	☒	☒	☒	☒	☒
22"	☒	☒	☒	☒	☒	☒	☒
24"	☒	☒	☒	☒	☒	☒	☒

CALL PREMIER COMPONENTS FOR CUSTOM ANGLE ELBOWS

## SQUARE 45° BRANCHES ('Y' OR 'K' STYLE)

SIZE	10ga. PAINTED	10ga. GALVANIZED	7ga. PAINTED	7ga. GALVANIZED	Add for 1/4" Urethane	Add fo 10ga. AR Steel Lined	Add for 1/4" Ceramic Tile Lined
6"	☒	☒	☒	☒	☒	☒	☒
8"	☒	☒	☒	☒	☒	☒	☒
10"	☒	☒	☒	☒	☒	☒	☒
12"	☒	☒	☒	☒	☒	☒	☒
14"	☒	☒	☒	☒	☒	☒	☒
16"	☒	☒	☒	☒	☒	☒	☒
18"	☒	☒	☒	☒	☒	☒	☒
20"	☒	☒	☒	☒	☒	☒	☒
22"	☒	☒	☒	☒	☒	☒	☒
24"	☒	☒	☒	☒	☒	☒	☒

Designate 'Y' or 'K' style when ordering.

## SQUARE 45° THREE WAY BRANCHES

SIZE	10ga. PAINTED	10ga. GALVANIZED	7ga. PAINTED	7ga. GALVANIZED	Add for 1/4" Urethane	Add fo 10ga. AR Steel Lined	Add for 1/4" Ceramic Tile Lined
6"	☒	☒	☒	☒	☒	☒	☒
8"	☒	☒	☒	☒	☒	☒	☒
10"	☒	☒	☒	☒	☒	☒	☒
12"	☒	☒	☒	☒	☒	☒	☒
14"	☒	☒	☒	☒	☒	☒	☒
16"	☒	☒	☒	☒	☒	☒	☒
18"	☒	☒	☒	☒	☒	☒	☒
20"	☒	☒	☒	☒	☒	☒	☒
22"	☒	☒	☒	☒	☒	☒	☒
24"	☒	☒	☒	☒	☒	☒	☒

## SQUARE 45° DEAD STOPS W/ REMOVABLE END

SIZE	10ga. PAINTED	10ga. GALVANIZED	7ga. PAINTED	7ga. GALVANIZED	Add for 1/4" Urethane	Add fo 10ga. AR Steel Lined	Add for 1/4" Ceramic Tile Lined
6"	☒	☒	☒	☒	☒	☒	☒
8"	☒	☒	☒	☒	☒	☒	☒
10"	☒	☒	☒	☒	☒	☒	☒
12"	☒	☒	☒	☒	☒	☒	☒
14"	☒	☒	☒	☒	☒	☒	☒
16"	☒	☒	☒	☒	☒	☒	☒
18"	☒	☒	☒	☒	☒	☒	☒
20"	☒	☒	☒	☒	☒	☒	☒
22"	☒	☒	☒	☒	☒	☒	☒
24"	☒	☒	☒	☒	☒	☒	☒

## SQUARE TURNDOWN FOR LOAD-OUT SPOUT

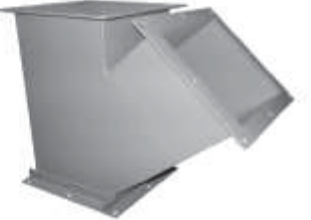
SIZE	10ga. PAINTED	10ga. GALVANIZED	7ga. PAINTED	7ga. GALVANIZED	Add for 1/4" Urethane	Add fo 10ga. AR Steel Lined	Add for 1/4" Ceramic Tile Lined
6"	☒	☒	☒	☒	☒	☒	☒
8"	☒	☒	☒	☒	☒	☒	☒
10"	☒	☒	☒	☒	☒	☒	☒
12"	☒	☒	☒	☒	☒	☒	☒
14"	☒	☒	☒	☒	☒	☒	☒
16"	☒	☒	☒	☒	☒	☒	☒
18"	☒	☒	☒	☒	☒	☒	☒
20"	☒	☒	☒	☒	☒	☒	☒
22"	☒	☒	☒	☒	☒	☒	☒
24"	☒	☒	☒	☒	☒	☒	☒

## SQUARE CONFIGURATION EXPANSION JOINTS

SIZE	10ga. PAINTED	10ga. GALVANIZED	7ga. PAINTED	7ga. GALVANIZED
6"	☒	☒	☒	☒
8"	☒	☒	☒	☒
10"	☒	☒	☒	☒
12"	☒	☒	☒	☒
14"	☒	☒	☒	☒
16"	☒	☒	☒	☒
18"	☒	☒	☒	☒
20"	☒	☒	☒	☒
22"	☒	☒	☒	☒
24"	☒	☒	☒	☒

CALL PREMIER FOR STAINLESS STEEL PRICING

SEE PAGE 35 FOR SQUARE 45° HIP-STYLE ELBOW DIMENSIONS



↑  
SQUARE EXPANSION JOINTS ALLOW UP TO 3" OF ADJUSTMENT  
↓